

F. UCHIYAMA & CO., LTD

Noboru Uchiyama Yokohama, Japan E. info@f-uchiyoama.com, Ph. +81 45 663 6677



Mitsubishi Logisnext

T1B2L25

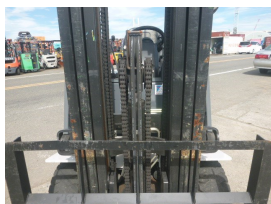
2018

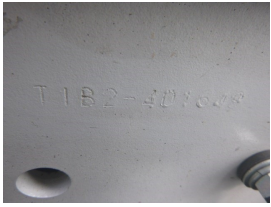
Yokohama, Japan

onQ-65289

FORKLIFTS - COUNTER BALANCE ELECTRIC
USED - SALE

Date Listed	13 Jan 2025
Serial Number	401649
Machine Hours	2102
Power Type	Battery Electric
Lift Capacity	2,500 kg(5,512 lb)
Mast Type	Triplex (3 Stage)
Maximum Lift Height	4,300 mm(169 in)





BETTER, SMARTER, MORE FOCUSED, EASY AS.

- Machinery-onQ Asia is a platform for the sale and acquisition of both new & used mobile machinery in the Middle East, South, East and Southeast Asia.
- The platform features forklifts, warehouse equipment, container handlers, log handlers, aerial work platforms, port cranes, tow trucks, terminal tractors, industrial sweepers and forklift attachments.

Machinery-onQ is a Business Platform by ForkliftAction Media.

This platform is produced by FORKLIFTACTION



<https://asia.machinery-onq.com/machine-forklifts-counter-balance-electric-mitsubishi-logisnext-t1b2l25-2018-used-sale-japan/65289>

© ForkliftAction Media 2025