



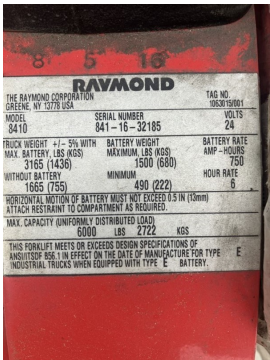
Raymond
841-16-32185
2016
 Flesherton, Ontario, Canada

onQ-66301

WAREHOUSE MOVERS & LIFTS - PALLET MOVERS
 USED - SALE

Date Listed 13 Feb 2025
Reference 16490510/1-12-14
Power Type Battery Electric

ADDITIONAL INFORMATION
 USED RAYMOND 96" END CONTROL RIDER, 24V BATTERY
 8,000LBS CAPCITY



RAYMOND		TAG NO.
THE RAYMOND CORPORATION GREENE, NY 12778 USA		80K15981
MODEL	SERIAL NUMBER	VOLTS
8410	841-16-32185	24
TRUCK WEIGHT +/- 5% WITH BATTERY	BATTERY WEIGHT	BATTERY RATE
MAX. BATTERY LBS (KGS)	MAXIMUM LBS (KGS)	AMP-HOURS
3185 (1438)	1500 (680)	750
WITHOUT BATTERY	MINIMUM	HOURLY RATE
1665 (755)	490 (222)	6
HORIZONTAL MOTION OF BATTERY MUST NOT EXCEED 0.5 IN (13mm) AT EACH RESTRAINT TO COMPARTMENT AS REQUIRED.		
MAX. CAPACITY (UNIFORMLY DISTRIBUTED LOAD)		
6000	LBS	2722
KGS		
THIS FORKlift MEETS OR EXCEEDS DESIGN SPECIFICATIONS OF ANSI/ISO 8518-1 IN EFFECT ON THE DATE OF MANUFACTURE FOR TYPE E INDUSTRIAL TRUCKS WHEN EQUIPPED WITH TYPE E BATTERY.		